

# BLOXR® XPF® Attenuating Products

Reduce your  
annual spend on  
x-ray protection\*

Comfortable, durable  
& long-lasting



\*Details on page 4



# About BLOXR Solutions

BLOXR Solutions, LLC, is a USA manufacturer of patented scatter radiation protection products designed to reduce exposure for clinicians and patients through innovative applications of its proprietary technologies. Over the past 20 years, x-ray technology has progressed rapidly with manufacturers developing equipment to achieve clearer images at lower kVp levels. The use of x-ray and fluoroscopy in surgery and evaluative procedures is increasing, and will continue to expand, leading to increases in the cumulative dose that surgeons and techs are exposed to over time. Protection from this expanded level of scatter radiation is what BLOXR seeks to offer its customers. BLOXR Solutions is a wholly owned subsidiary of NEXT Medical Products Company.



ISO 13485



NEXT Medical is a certified minority, woman-owned small business

Registered with Health Canada

FDA 510(k) Clearance

XPF Garments are UDI Compliant

U.S. Patent Numbers 8754389, 8993989 and 9114121



**BLOXR**

BLOXR®, XPF®, ULTRABLOX® and BLOXRTRAX™ are trademarks of BLOXR Solutions.

# ULTRABLOX<sup>®</sup> X-Ray Attenuating Cream

Protect the hands from scatter radiation and reduce dose exposure without the loss of tactile feel. Clinical studies have shown up to 85% dose reduction. The cream can be applied directly to skin or encapsulated between two pair of surgeon's gloves.

- Patented formula.
- Easily incorporates into physician's prep procedure -- a practical and efficient alternative to leaded gloves.
- Contains no lead, lead by-products or other toxic materials. Biocompatible.
- Eliminates the need to inventory multiple sizes of lead gloves.



ULTRABLOX<sup>®</sup> X-Ray  
Attenuating Hand Cream  
50 Gram tube, sterile,  
packaged in a peel pouch

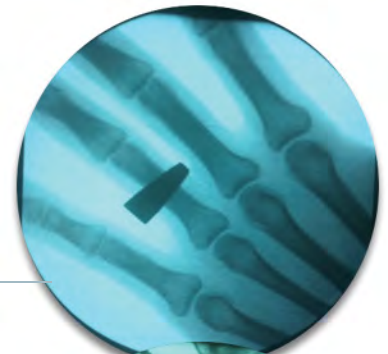
PN	Quantity
100036	15/box



U.S. Patent Number 9,114,121

# ULTRA BLOX<sup>®</sup>

Unprotected hand



Hand protected with  
ULTRABLOX  
Attenuating Cream



# The Benefits of XPF® Protection

# Why XPF Technology?



## BLOXR

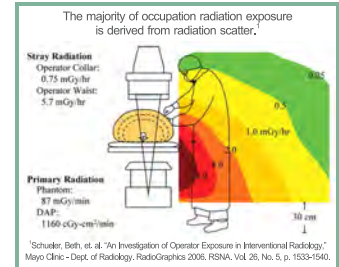
XPF® Radiation Shields are intended for use as shields against ionizing radiation such as X-rays, Fluoroscopy or CT technology.

- Flexible
- Lightweight
- Independently validated
- Durable
- Non-toxic
- Washable
- Effective scatter radiation protection
- “Green” no heavy metals
- Three year warranty



U.S. Patent Numbers 8754389 and 8993989.  
BLOXR XPF has 510(k) clearance from the FDA.

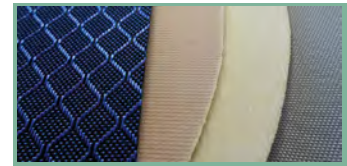
Effective scatter radiation protection doesn't have to be heavy, toxic or easily breakable. BLOXR® XPF® technology is lead-free with no heavy metals. It helps clinicians achieve a reduced dose with no compromise in protection across the full kVp spectrum. It's extremely flexible, highly durable and lightweight.



**COST SAVINGS:** We can help drive down your annual expense for scatter radiation protection. Our long-lasting apparel is backed by a three-year warranty. In fact, original BLOXR customers report garments still in use after six years and counting. Why pay year after year for replacement of cracked or grungy lead/light lead garments when XPF provides a proven alternative? When finally at the end of its useful life, you won't incur exorbitant disposal costs because XPF garments contain no lead or heavy metal. They can be included in regular trash.

**3 THREE-YEAR WARRANTY**  
XPF products will be free from cracks or radiation leaks due to defects in material or workmanship for three years from date of purchase. Refer to BLOXR sales policy for details.

**UNIQUE LEAD-FREE ATTENUATION:** XPF garments feature a patented, lightweight bi-layer constructed of barium sulfate and bismuth oxide. The two layers work together to provide the best attenuation by weight as compared to other common attenuating materials. This design uniquely filters out the lower energy, the more harmful part of the X-ray beam, thereby providing increased safety and reduced dose. Independently validated 0.5mm Pb equivalent. *Made in the USA.*



**EASY WEAR & CARE:** XPF garments are able to bend and flex with the user providing a comfortable wearing experience. When not being worn, they can be folded or hung for storage because they resist cracking. If they become dirty or sweaty, they can be wiped clean or machine washed and dried.



# XPF® Vests & Skirts

A separate skirt and vest provide added flexibility and superior weight distribution to help reduce back pain and the limited mobility of heavy aprons.

- Standard Vest overlaps in front.
- Vest with Elastic Back offers adjustable closure for improved fit. Design provides lumbar support and helps remove weight from shoulder area.

All items sold separately.

Vest		Vest with Elastic Back		Chest	Low Waist	Length
PN*	Size	PN*	Size			
100096	XS	100399	XS	in: 30" - 32" cm: 76 - 81	in: 32" - 34" cm: 81 - 86	in: 21" cm: 53
100030	S	100400	S	in: 32" to 35" cm: 81 - 89	in: 37" - 39" cm: 94 - 99	in: 22" cm: 56
100031	M	100401	M	in: 36" - 41" cm: 91 - 104	in: 39" - 42" cm: 99 - 107	in: 24" cm: 61
100032	L	100402	L	in: 41" - 46" cm: 104 - 117	in: 42" - 44" cm: 107 - 112	in: 25" cm: 64
100040	XL	100403	XL	in: 46" - 51" cm: 117 - 130	in: 44" - 47" cm: 112 - 119	in: 27" cm: 69
100097	XXL	100404	XXL	in: 48" - 53" cm: 122 - 135	in: 48" - 51" cm: 122 - 130	in: 28" cm: 71

Options/Accessories (page 9):  
 Thyroid Collar • Cap • Tethering • Embroidery • Colored binding  
 • Add sleeve(s) • Elastic support belt (standard Vest only)



**VEST or SKIRT**  
 Lead equivalency  
**FRONT: 0.5 mm Pb**  
**BACK: 0.25 mm Pb**

**VEST with ELASTIC BACK or SKIRT**  
 Lead equivalency  
**FRONT: 0.5 mm Pb**  
**BACK: 0.25 mm Pb**

Skirt		Waist	Hips	Length
PN*	Size			
100106	XS	in: 26" - 29" cm: 66 - 74	in: 36" cm: 91	in: 19" cm: 48
100027	S	in: 29" to 32" cm: 74 - 81	in: 38" cm: 97	in: 20" cm: 50
100028	M	in: 32" - 34" cm: 81 - 86	in: 41" cm: 104	in: 21" cm: 53
100029	L	in: 34" - 36" cm: 86 - 91	in: 44" cm: 112	in: 22" cm: 56
100039	XL	in: 37" - 40" cm: 94 - 102	in: 49" cm: 124	in: 23" cm: 58
100102	XXL	in: 40" - 43" cm: 102 - 109	in: 52" cm: 132	in: 24" cm: 61



Options/Accessories (page 9):  
 Thyroid Collar • Cap • Tethering • Embroidery • Colored binding  
 • Anti-slip lining • Lumbar elastic band • Suspenders



\*Add color code suffix to PN  
 (color chart page 9)

See page 4 for full details on the benefits of XPF protection.

# XPF® Aprons

Four styles of aprons with XPF protection and a three-year warranty. Choose the style that best meets your needs.

## Frontal Apron

PN*	Size	Chest	Length	Max Hgt
100019	XS	in: 30" - 34" cm: 76 - 86	in: 32" cm: 81	5' 0" cm: 152
100010	S	in: 34" to 38" cm: 86 - 97	in: 35" cm: 89	5' 5" cm: 165
100011	M	in: 38" - 42" cm: 97 - 107	in: 40" cm: 102	5' 10" cm: 178
100012	L	in: 42" - 46" cm: 107 - 117	in: 44" cm: 112	6' 3" cm: 191
100038	XL	in: 46" - 50" cm: 117 - 127	in: 46" cm: 117	6' 8" cm: 203
100045	XXL	in: 50" - 56" cm: 127 - 142	in: 47" cm: 119	6' 10" cm: 208

Options/Accessories (page 9):  
Thyroid Collar • Cap • Tethering • Embroidery • Colored binding • Sleeve(s) • Elastic support belt



**FRONTAL APRON**

Lead equivalency  
FRONT: 0.5 mm Pb



**FRONTAL APRON with ELASTIC BACK**

Lead equivalency  
FRONT: 0.5 mm Pb

## Frontal Apron with Elastic Back

PN*	Size	Chest	Length	Max Hgt
100420	XS	in: 30" - 34" cm: 76 - 86	in: 32" cm: 81	5' 0" cm: 152
100421	S	in: 34" to 38" cm: 86 - 97	in: 35" cm: 89	5' 5" cm: 165
100422	M	in: 38" - 42" cm: 97 - 107	in: 40" cm: 102	5' 10" cm: 178
100423	L	in: 42" - 46" cm: 107 - 117	in: 44" cm: 112	6' 3" cm: 191
100424	XL	in: 46" - 50" cm: 117 - 127	in: 46" cm: 117	6' 8" cm: 203
100425	XXL	in: 50" - 56" cm: 127 - 142	in: 47" cm: 119	6' 10" cm: 208

Options/Accessories (page 9):  
Thyroid Collar • Cap • Tethering • Embroidery • Colored binding • Quick release drop shoulder(s) • Back shoulder strap • Sleeve(s)



**BLOXR**

\*Add color code suffix to PN (color chart page 9)

See page 4 for full details on the benefits of XPF protection.



### WRAP APRON

Lead equivalency  
 FRONT: 0.5 mm Pb  
 BACK: 0.25 mm Pb



### DROP APRON

Lead equivalency  
 FRONT: 0.5 mm Pb



Thyroid collars  
 and tethers sold  
 separately.

### Wrap Apron

PN*	Size	Chest	Length	Max Hgt
100107	XS	in: 30" - 32" cm: 76 - 81	in: 32" cm: 81	5' 0" cm: 152
100103	S	in: 32" to 35" cm: 81 - 89	in: 35" cm: 89	5' 5" cm: 165
100104	M	in: 36" - 41" cm: 91 - 104	in: 40" cm: 102	5' 10" cm: 178
100105	L	in: 41" - 46" cm: 104 - 117	in: 44" cm: 112	6' 3" cm: 191
100108	XL	in: 46" - 51" cm: 117 - 130	in: 46" cm: 117	6' 8" cm: 203

Options/Accessories (page 9):  
 Thyroid Collar • Cap • Tethering • Embroidery •  
 Colored binding • Sleeve(s) • Elastic support belt

### Drop Apron

PN*	Size	Chest	Length	Max Hgt
100041	S	in: 34" to 38" cm: 86 - 97	in: 37" cm: 94	5' 5" cm: 165
100042	M	in: 38" - 42" cm: 97 - 107	in: 42" cm: 107	5' 10" cm: 178
100043	L	in: 42" - 46" cm: 107 - 117	in: 47" cm: 119	6' 3" cm: 191
100044	XL	in: 46" - 51" cm: 117 - 130	in: 52" cm: 132	6' 8" cm: 203

Options/Accessories (page 9):  
 Thyroid Collar • Cap • Tethering • Embroidery  
 • Colored binding • Sleeve(s)

\*Add color code suffix to PN  
 (color chart page 9)

See page 4 for full details on the  
 benefits of XPF protection.

# XPF® Thyroid Collars and Caps

## THYROID COLLAR

Lead equivalency 0.5 mm Pb over thyroid

Comfortably fits around the neck. Machine washable. Secures with a hook and loop closure at the back of the neck.



### Thyroid Collar

PN*	Size	Neck
100007	S	in: 10" - 14" cm: 25 - 10
100008	M	in: 15" - 17" cm: 38 - 43
100009	L	in: 18" - 20" cm: 46 - 51
100049	XL	in: 21" - 23" cm: 53 - 58

Options/Accessories (page 9):  
Embroidery • Optional plastic clip or magnetic closure  
• Tether to garment

## CAP

Lead equivalency 0.5 mm Pb front/sides

Mesh top and wicking material against skin provide maximum comfort for the wearer. Can be wiped down or machine washed. Ties securely in back.



### Cap

PN*	Size	Head
100098	S	in: 21" - 23" cm: 53 - 58
100099	M	in: 22" - 24" cm: 56 - 61
100100	L	in: 23" - 25" cm: 58 - 64

Options/Accessories (page 9): Embroidery  
• Colored binding • Tether to garment

*"Radiation exposure...is significantly higher on the left and center compared with the right side of the cranium."*

Reeves, et al., Invasive Cardiologists Are Exposed to Greater Left Sided Cranial Radiation The BRAIN Study, JACC: Cardiovascular Interventions, Vol 8, Iss 9, Aug 2015.

## HIGH NECK THYROID COLLAR

Lead equivalency 0.5 mm Pb over full bib and sides

Machine washable. Secures with a hook and loop closure at the back.



### High Neck Thyroid Collar

PN*	Size	Neck
100067	S	in: 10" - 14" cm: 25 - 10
100068	M	in: 15" - 17" cm: 38 - 43
100069	L	in: 18" - 20" cm: 46 - 51

Options/Accessories (page 9):  
Embroidery • Optional plastic clip or magnetic closure • Tether to garment

## DISPOSABLE

- 0.5 mm lead equivalency
- Light blue polypropylene
- Not cleanable, limited use • Packaged 12/bag

### Thyroid Collar



PN	Size	Neck
100001	S	in: 10" - 14" cm: 25 - 10
100002	M	in: 15" - 17" cm: 38 - 43
100003	L	in: 18" - 20" cm: 46 - 51
100051	XL	in: 21" - 23" cm: 53 - 58

### Cap



PN	Size	Head
100004	S	in: 21" - 23" cm: 53 - 58
100005	M	in: 22" - 24" cm: 56 - 61
100006	L	in: 23" - 25" cm: 58 - 64



**BLOXR**

\*Add color code suffix to PN (color chart page 9)

See page 4 for full details on the benefits of XPF protection.



# Alternatives & Options

Visit [www.bloxr.com](http://www.bloxr.com) for up-to-date color listings

## ▶ Tether

Keep thyroid collars or caps close at hand with tethers (nylon webbing with 1" split ring).



PN	Qty
600001	1

One tether is needed on each garment mating together.

## ▶ Sleeve

Add a protective sleeve to a vest or apron.

Specify desired length from top of shoulder.



PN	Qty
SLV-LEFT	1 left
SLV-RIGHT	1 right
SLV-PAIR	1 pair

Attaches with hook and loop. On request, can be attached with snaps or sewn on.

## ▶ Cap Sleeve

For extra coverage in axilla/breast tissue area.



PN	Qty
600015	1 sleeve
600016	1 pair

Sewn on vest or apron. Extends approx 180 degrees around armhole toward front. Width approx 3.5".

## ▶ Elastic Support Belt

Add to standard vest or apron for lumbar support.



PN*	Size
100304	XS
100305	S
100306	M
100307	L
100308	XL
100309	XXL

Height is 6".



On request, can be attached to garment with Velcro-type hook/loop or permanently sewn.

Not for use on vests/aprons with an elastic back.

\*Add color code to PN

## ▶ Thyroid Collar Closure

Alternatives are clip (shown) or magnetic.

Velcro-type hook/loop closure is standard.



## For Elastic-Back Aprons:

### ▶ Quick-Release Drop Shoulder

Specify right, left or both.

PN	Qty
600010	1 Drop Shoulder



### ▶ Back Shoulder Strap

PN	Qty
600011	1



Strap is 2" high.

## For Skirts:

### ▶ Anti-Slip Backing

Add a non-slip rubber strip, 7/8" high, to interior waist.

PN	Qty
600006	1

### ▶ Inner Lumbar Elastic Band

Add to upper back area of interior lining, 6" high.

PN	Qty
600014	1



### ▶ Suspenders

Black, criss-cross in back. Not removable.

PN	Qty	Custom measurements required.
100114	1	



### ▶ Dosimeter Pocket

Add a dosimeter pocket to the inside lining of a garment.

PN	Qty
600007	1



Specify desired location

## ▶ XPF® Fabric Color Codes

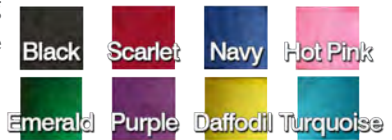
Add color code suffix to garment part number.



## ▶ Optional Color Binding

Select a unique color for the edging (black is standard).

PN	Qty	Not available on thyroid collars.
600012	on 1 garment	
600013	on 1 cap	



▶ Colorblock Fabrics  
Fun patterns with black accents and edging.

## ▶ Embroidery

Personalize a garment with direct embroidery or add a matching removable name patch. Choose script or block font.

PN	Description
600004	Directly on garment, 1 line
600005	Directly on garment, 2 lines

600002	Patch, 1 line
600003	Patch, 2 lines

Patches are attached with Velcro-type hook/loop. Can be permanently sewn on request.



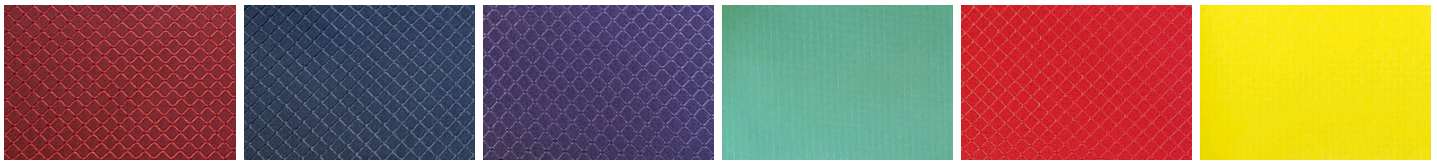
Standard thread color is white.  
Other colors available on request.



## AVAILABLE COLORS

XPF® machine-washable radiation protection garments are available in the following colors:

Add **color suffix** to product part number to designate color.



Red  
-RED

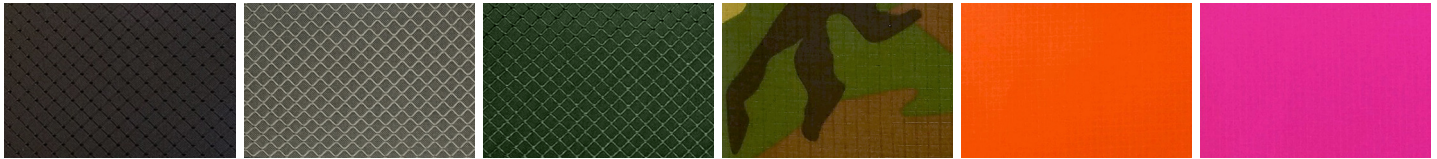
Blue  
-BLU

Purple  
-PUR

Turquoise  
-TUR

Poppy Red  
-POP

Yellow  
-YEL



Black  
-BLK

Gray  
-GRY

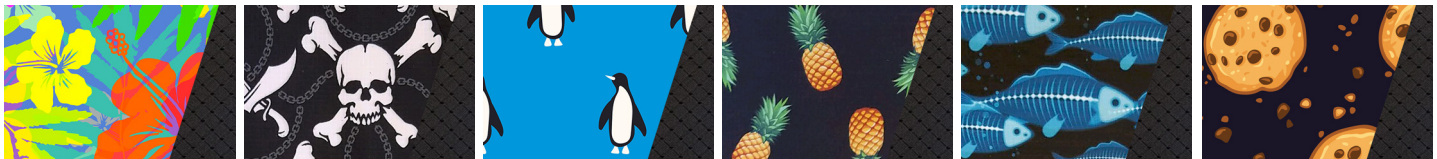
Green  
-GRN

Camouflage  
-CAM

Blaze Orange  
-ORA

Hot Pink  
-PNK

"Colorblock" fabric options (fun pattern with black accents and edge):



Tropical Floral  
-TROC

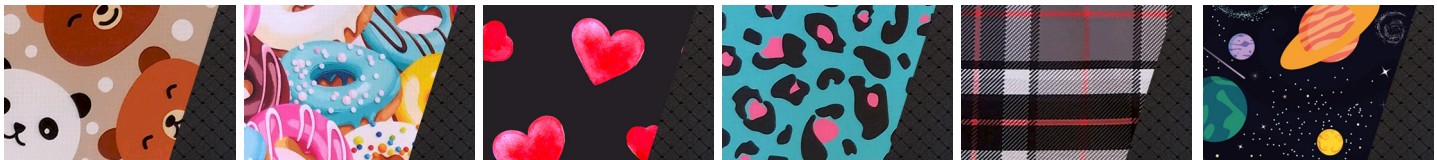
Skulls  
-SKUC

Penguins  
-PENC

Pineapples  
-PINC

Fish  
-FSHC

Cookies  
-COOC



Bears  
-BEAC

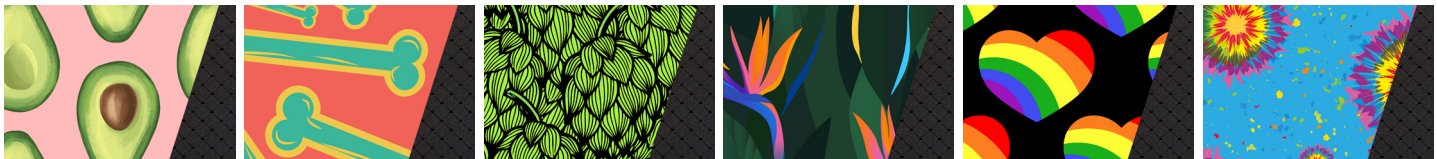
Donuts  
-DONC

Hearts  
-HEAC

Leopard  
-LEOC

Tartan  
-TARC

Outer Space  
-SPAC



Avocado  
-AVOC

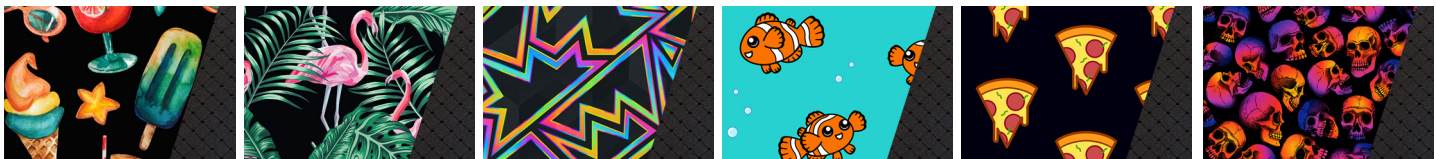
Bones  
-BONC

Hops  
-HOPC

Jungle Flowers  
-JUNC

Rainbow Hearts  
-RAIC

Tie Dye  
-TIEC



NEW

Chill  
-CHLC

NEW

Flamingo  
-FLAC

NEW

Geometric Neon  
-GEOC

NEW

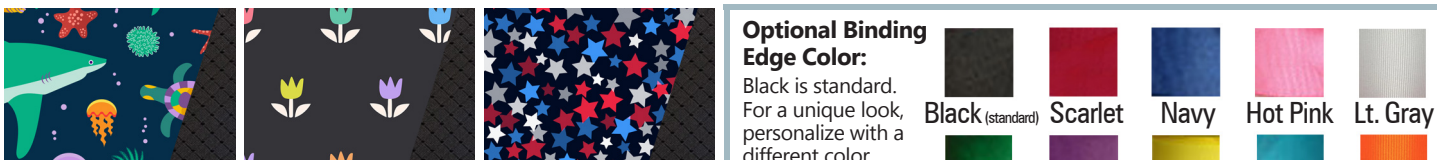
Clownfish "Nemo"  
-NEMC

NEW

Pizza  
-PIZC

NEW

Scary Skulls  
-SSKC



NEW

Sharks  
-SHAC

NEW

Tulips  
-TULC

NEW

USA Stars  
-USAC

### Optional Binding Edge Color:

Black is standard. For a unique look, personalize with a different color.

Not available on standard thyroid collars. Not an exact match to our fabrics. Additional charge applies.



# XPF® Patient Protection

## PATIENT SHIELD

Lead equivalency 0.5 mm Pb in front

Designed for placement over radio-sensitive organs and gonads to protect the patient from harmful ionizing scatter radiation.

### Patient Shields

PN*	Size	PN*	Size
100201	18" x 18" (46 x 46 cm)	100210	24" x 24" (61 x 61 cm)
100202	20" x 20" (51 x 51 cm)	100211	24" x 36" (61 x 91 cm)
100203	14" x 16" (36 x 41 cm)	100212	24" x 46" (61 x 117 cm)
100204	11" x 34" (28 x 86 cm)	100213	8" x 10" (20 x 25 cm)
100206	16" x 24" (41 x 61 cm)	100214	12" x 12" (31 x 31 cm)
100207	18" x 24" (46 x 61 cm)	100215	16" x 12" (41 x 31 cm)
100208	20" x 24" (51 x 61 cm)	100216	12" x 14" (31 x 36 cm)

Options/Accessories (page 9):  
Embroidery • Colored binding • Belt with hook/loop closure  
Custom sizes available



Orientation is important: the BLOXR® logo on the Patient Shield should face the radiation source

## MITTS

Closed Mitts have a sewn in slit to allow fingers to be freed if desired. Open Mitts enable easy movement of fingers. One size fits all.

PN	Style
100037	Open, pair
100048	Closed, pair



Closed

Open

## PATIENT PONCHO

Lead equivalency 0.5 mm Pb in front

Minimizes a patient's exposure to ionizing radiation while providing anatomical access for the clinician. The sleeveless design enables it to be donned without moving the patient's arm. Poncho is lightweight so it doesn't put uncomfortable pressure on the patient. Built in flap covers the thyroid area. Extenders can be added for extra length for taller patients. Helpful during orthopedic, interventional, podiatry, dentistry and trauma cases.

### Patient Poncho

### Extender Sets (optional)

PN*	Size	Size	PN*	Lengths
100231	#1 Small Child	For #1	100240	4" (10.2 cm), 6" (15.2 cm), 8" (20.3 cm)
100232	#2 Child	For #2	100241	4" (10.2 cm), 6" (15.2 cm), 8" (20.3 cm), 10" (25.4 cm)
100233	#3 Small Adult	For #3	100242	4" (10.2 cm), 6" (15.2 cm), 8" (20.3 cm), 10" (25.4 cm)
100234	#4 Adult	For #4	100243	4" (10.2 cm), 6" (15.2 cm), 8" (20.3 cm), 10" (25.4 cm)
100235	#5 Large Adult	For #5	100244	4" (10.2 cm), 6" (15.2 cm), 8" (20.3 cm), 10" (25.4 cm)

Options/Accessories (page 9): Embroidery • Colored binding



FRONT  
shown with extender



BACK



BLOXR

\*Add color code suffix to PN (color chart page 9)

See page 4 for full details on the benefits of XPF protection.

# Eye Protection & Storage Solutions

## RADIATION PROTECTION EYEWEAR

BLOXR Solutions offers a wide selection of radiation protection eyewear.

- Prescription and non-prescription.
- Lenses provide 0.75 mm lead equivalency. Side shields (when applicable) provide 0.5 mm.
- Lifetime warranty on defects in material and workmanship.
- Some models include anti-fog options.

Styles pictured at right are listed below (visit [bloxr.com](http://bloxr.com) for a complete listing of all styles and colors):

PN	Description (color)
7MLMX-CRI	Microlite MX (crimson)
7NKBRZ-BLK	Nike Brazen (black)
7MLFT-TOR	Microlite Fitover (tortoise)
7NKPRE6.0-BLK	Nike Premier (black)



## STORAGE SOLUTIONS

Organize or transport your radiation protection apparel.

PN	Description
----	-------------

### Hangers

7XHANG	Standard, 20" W (51 cm)
7XHANGBA	Brushed Aluminum, 24" W (61 cm)

### Peg Racks, Wall Mount

7XPEG02	2 pegs (for 1 garment)
7XPEG04	4 pegs (for 2 garments)
7XPEG08	8 pegs (for 4 garments)
7XPEG10	10 pegs (for 5 garments)
7XPEG14	14 pegs (for 7 garments)
7XPEG18	18 pegs (for 9 garments)

### Swing Racks, Wall Mount

7XSWNGR	Right
7XSWNGL	Left
7XSWNGF	Full set

### Valet Rack

7XVRACK	Rack
7XVRACK10	Rack with 10 hangers

### Spider Rack

7XSPID	Eight arms, 24" (61 cm) base
--------	------------------------------



### Messenger Bag

Color: Black. Includes patch embroidery. Dimensions: 17" W x 13.5" H x 6" D (43 cm x 34 cm x 15 cm) Includes two external pockets, three internal pockets and slots for pens, cell phone, earbuds, etc.

PN  
100881



### Drawstring Bag

Color: Black with choice of accent color. Includes direct embroidery. Dimensions: 15" W x 17.5" H x 3.5" D (38 cm x 44 cm x 9 cm) Includes two outer pockets and one inner pocket. Not recommended for use with our larger sized garments.

PN\*  
100882



\*Add color code suffix to PN (color chart page 9)

For help managing and organizing your radiation protection inventory, ask about our BLOXRTRAX™ cloud-based tracking system for radiation protection garments.

# Bra Inserts for Breast Protection



**BLOXR**

## ▶ Bra Inserts

XPF® Bra Inserts provide 0.5 mm lead equivalent protection over the breast and easily slip inside bra. Useful for those concerned about or at risk for breast cancer. Helpful in situations where the size of the radiation protection apron provided to the user does not adequately cover the chest area.

Lined with soft wicking material for the wearers' comfort. Can be wiped clean or machine washed and dried. Available in standard cup sizes A through D.

XPF Inserts are sold as a pair in hot pink or black.



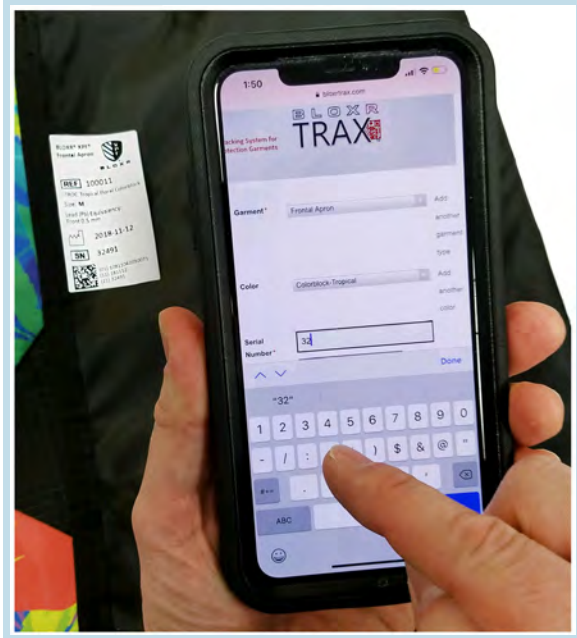
PN	Size, color
10013A-BLK	Cup size A, black
10013A-PNK	Cup size A, hot pink
10013B-BLK	Cup size B, black
10013B-PNK	Cup size B, hot pink
10013C-BLK	Cup size C, black
10013C-PNK	Cup size C, hot pink
10013D-BLK	Cup size D, black
10013D-PNK	Cup size D, hot pink



**BLOXR**

BLOXR Solutions, LLC, P.O. Box 5148, North Branch, NJ 08876 USA  
855-256-9729 . 801-590-9880  
www.bloxr.com . Email: order@bloxr.com

# Garment Tracking System



The BLOXRTRAX™ tracking system for radiation protection garments is specifically designed to help your facility:

- Manage and organize all of its radiation protection inventory.
- Maintain a garment's life cycle and inspection history.
- Be prepared for the next audit.



The BLOXRTRAX system features a robust search function that allows multiple ways to manage and find your data easily. Cloud-based storage enables quick access from any web-enabled device. Data can be exported in spreadsheet format. Contact your local sales representative for details.



BLOXR Solutions, LLC, 2250 S. 1300 West, Suite C, Salt Lake City, UT 84119 USA  
801-590-9880 . Toll Free 855-256-9729 . Fax 877-254-4888  
www.bloxr.com . Email: order@bloxr.com